

FLOW INTERCEPTION

Pneumatic Rotary Actuators CPU



EASY, COMPACT AND SIMPLE WITH 3 PRECISION SIGNALLING LEVELS

CPU Pneumatic Valve Actuators are suitable for a wide range of tasks in industrial processes to automate the actuation of quarter-turn valves.

CPU can be equipped with 3 different signalling systems:



Benefits



Highly flexible due to interchangeable components



Fast material flow management




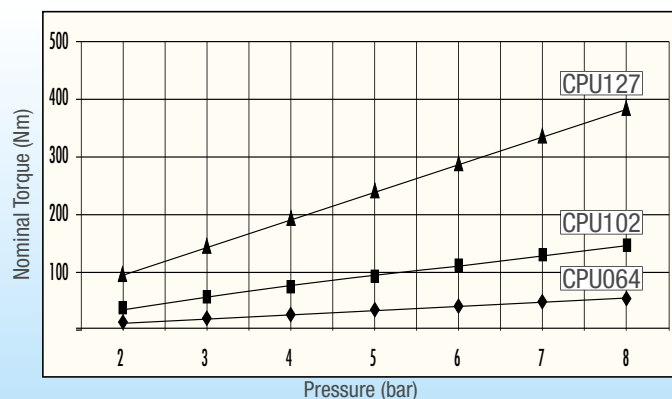
Enhanced process quality



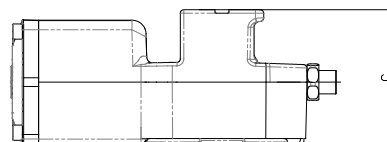
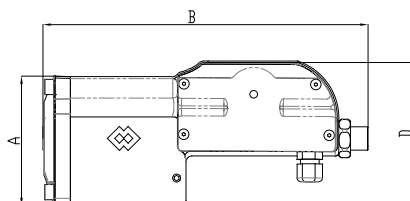
Reliable operation

Technical Features

- Interchangeable signalling systems
- NAMUR solenoid valves
- Quick feedback
- Easy to assemble, inspect and clean
- Compact design for easy maintenance
- ATEX versions available 



Overall Dimensions



CODE	A	B	C	D	Ø H DIN 1482	N	Ø Thread	kg
CPU 064 ◆	80	260	116	111	22x19	50	1/8"	3.0
CPU 102 ■	106	265	116	123	22x19	50	1/8"	4.0
CPU 127 ▲	143	424	164	166	28x25	80	1/4"	9.0